



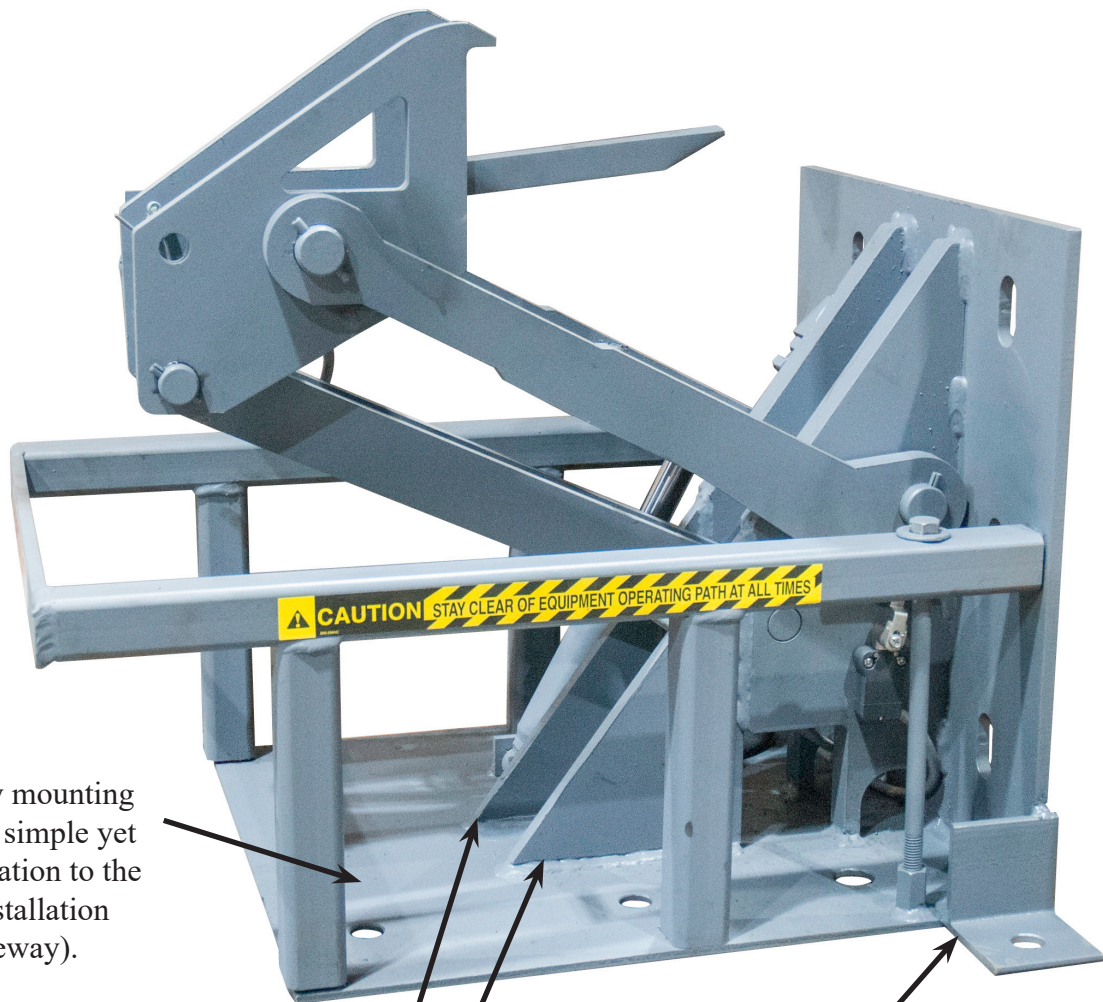
Engineered for Safety

Pentalift Model HFR32SM Vehicle Restraint

Designed for installation on loading dock driveway*

The Pentalift model HFR32SM vehicle restraint provides the same design and features of the successful and proven HFR32 vehicle restraint with the additional benefit of being suitable for installation attachment to the loading dock driveway*. This product addresses applications for which installation to the loading dock face is not possible or desirable. See web page <http://www.pentalift.com/loading-docks/prodinfoHFR.php> for more information on the HFR32 vehicle restraint system.

Features and Components



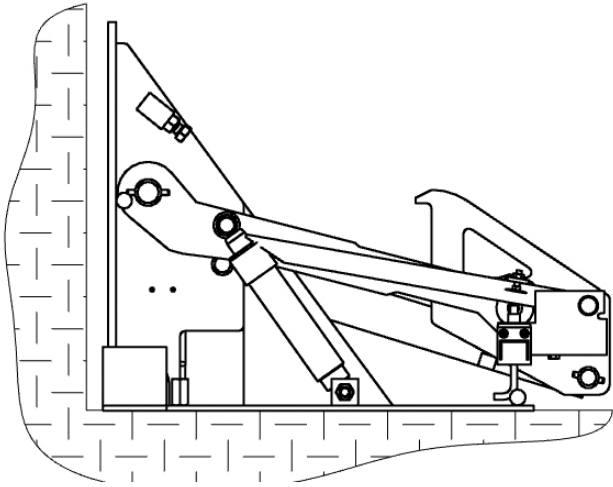
Heavy - Duty mounting plate ensures simple yet secure installation to the horizontal installation surface (driveway).

Additional structural gussets transfer forces to the vertical installation surface.

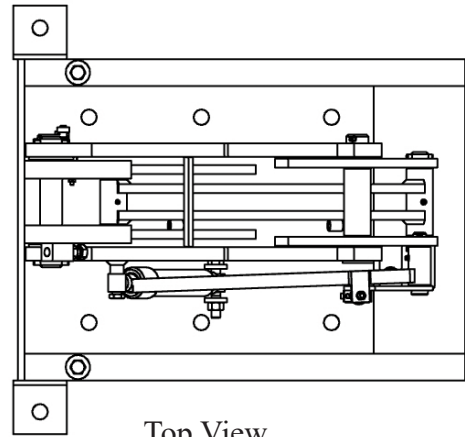
Side lagging brackets (one on each side) provide additional anchor points and spread the loads over a greater area of the driveway.

Note: Vehicle restraint is shown in a partially raised position.

HFR32SM Installation requirements



Side View



Top View
8 lag bolt locations shown

*The support surface for the vehicle restraint is typically the driveway in front of the loading dock. The dimensional location of the vehicle restraint on the loading dock is critical in maximizing the restraints functionality and ability to properly restrain trailers. When installing the vehicle restraint with the surface mounting option, install the restraint so it is centered laterally on the loading dock door and in a location from the dock face so that the back plate of the restraint is located 4" behind the face of the loading dock bumpers.

As well, confirm the installation surface in combination with the lag bolts (supplied by others) to be used for the installation has suitable strength to accept the forces of 4000 LBF minimum tension and 5000 LBF shear for each of the 8 lag bolts that will be required. Asphalt is typically not a suitable surface. Typically concrete of a sufficient depth and strength is required to accommodate the forces and loads as indicated. Refer to the product owner's manual for more detailed information.

Consult a Pentalift Sales Representative for additional information or equipment recommendations

Note: Some photos may reflect products with optional features. All Pentalift Equipment products are subject to design improvement through modification without notice.

PENTALIFT EQUIPMENT CORPORATION

P O Box 1510 Buffalo NY U.S.A. 14240-1510
P O Box 1060 Guelph ON Canada N1H 6N1

Phone (519) 763-3625 Fax (519) 763-2894
Phone (519) 763-3625 Fax (519) 763-2894

Website: www.pentalift.com

Email: dock@pentalift.com

Product Bulletin 0418D061
Printed in Canada