



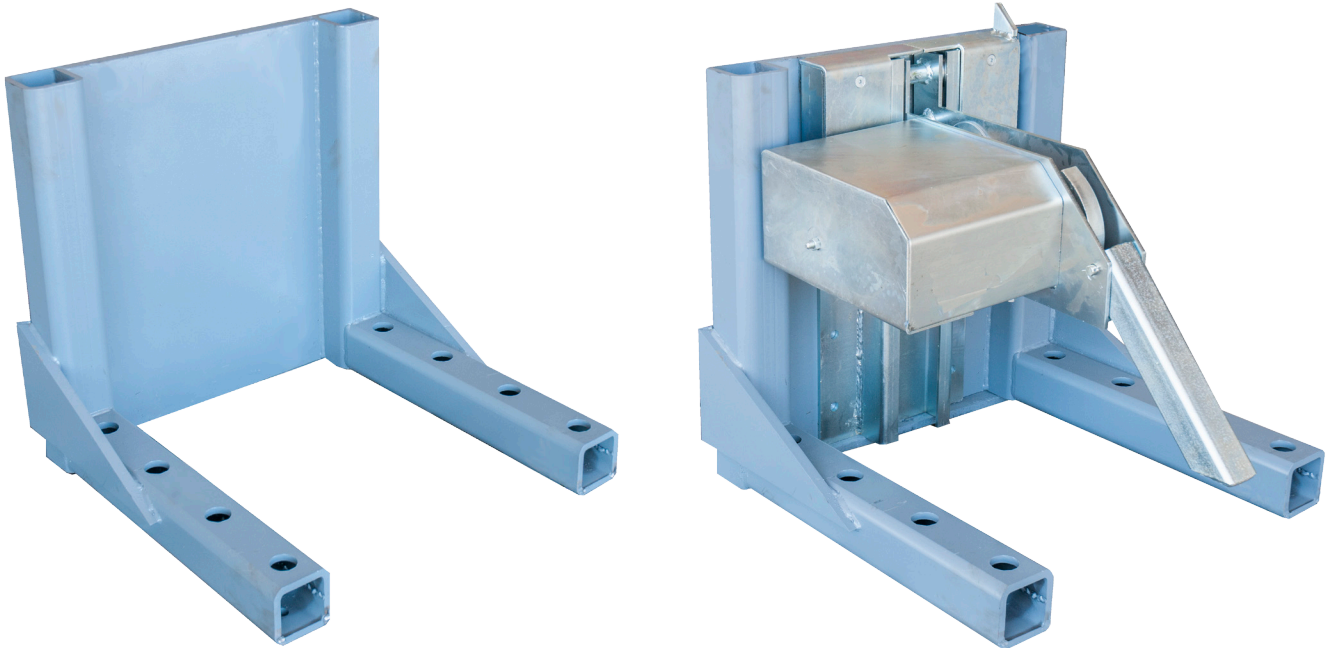
PENTALIFT EQUIPMENT CORPORATION

Application Designed: Vehicle Restraint Horizontal Surface Installation Assembly

Vehicle restraints are typically bolted to the face of the foundation wall at the loading dock with concrete anchor bolts.

A successful installation relies on a minimum structural strength of the foundation wall / dock face the restraint is attached to. If the foundation will not withstand the pull out forces from the restraint, the alternative is to attach the restraint to the concrete pad at grade in front of the dock leveler. The horizontal surface installation assembly is bolted down into position on top of the concrete pad. When the surface installation assembly and restraint are installed using this option, there are no forces exerted to the foundation wall / dock face.

A horizontal surface installation assembly is available for HFR32, RVR32, LPR35, MFR32 and MFR32SA models of vehicle restraints.



PENTALIFT EQUIPMENT CORPORATION

P O Box 1510 Buffalo NY U.S.A. 14240-1510
P O Box 1060 Guelph ON Canada N1H 6N1

Phone (519) 763-3625 Fax (519) 763-2894
Phone (519) 763-3625 Fax (519) 763-2894

Website: www.pentalift.com

Email: lift@pentalift.com